

# Standardized Impact Sound Pressure Levels according to ISO 140-7

## Comparison of field measurements of Impact Sound Insulation of Floors

Test number: 16

1: Sample plus substrate

Clever Choice loose-laid Hybrid Plank 10mm, Clever Sound 3mm underlay 200mm thick concrete slab, 120mm cavity with no insulation, 13mm plasterboard ceiling



2: Substrate

200mm thick concrete slab, 120mm cavity with no insulation, 13mm plasterboard ceiling



3:  $\Delta L'nT$



$\Delta L'nT$  improvement due to Clever Choice loose-laid Hybrid Plank 10mm, Clever Sound 3mm underlay

$L'nT_{w,40}$  curve

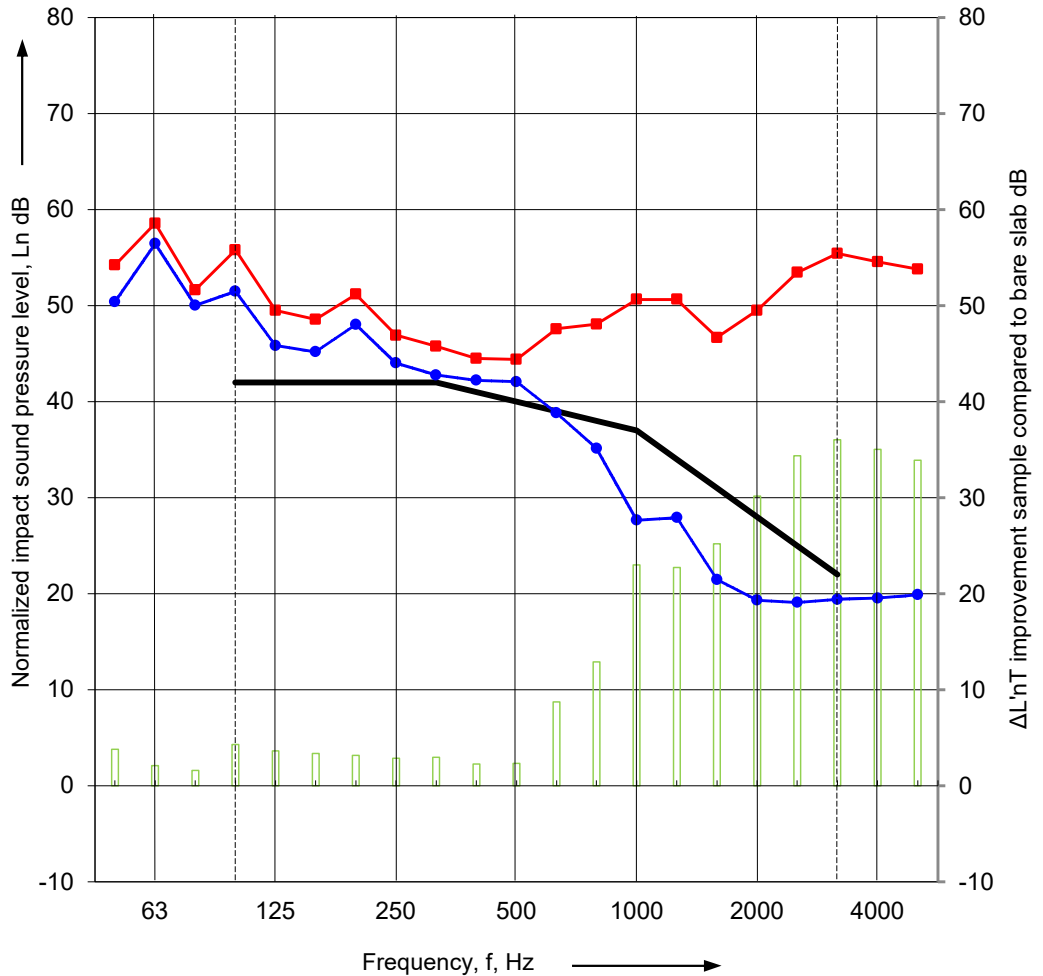


Frequency range according to the



curve of reference values (ISO 717-2)

Frequency f Hz	L'nT dB 1/3 octave		
	1	2	3
50	50	54	3.8
63	56	59	2.1
80	50	52	1.6
100	51	56	4.3
125	46	50	3.7
160	45	49	3.4
200	48	51	3.2
250	44	47	2.9
315	43	46	3.0
400	42	44	2.3
500	42	44	2.3
630	39	48	8.7
800	35	48	12.9
1000	28	51	23.0
1250	28	51	22.7
1600	21	47	25.2
2000	19	50	30.2
2500	19	53	34.4
3150	19	55	36.0
4000	20	55	35.0
5000	20	54	33.9



$L'nT_{w,40}$	40	58	n/a
$C_i$	1	-11	n/a
$C_i(50-2500)$	5	-9	n/a
$\Delta L'nT_{w,40}$	n/a	n/a	18
AAAC Star	6	2	n/a
FIIC	64	40	n/a

Rating according to ISO 717-2

1: Sample plus substrate  $L'nT_{w,40} (C_i ; C_i(50-2500)) = 40 (1 ; 5) \text{ dB};$   
 2: Substrate only  $L'nT_{w,40} (C_i ; C_i(50-2500)) = 58 (-11 ; -9) \text{ dB};$

Testing Company: Acoustic Works

Project number: 2024392 #

Location of test: Level 7 (of 15) residential building Ascot

Date of test: 3 October 2024

Client: Clever Choice Paxwood Pty Ltd

Sample area: 1m<sup>2</sup>

Room dimensions: 9.0m(L) x 4.0m(W) x 2.7m(H)